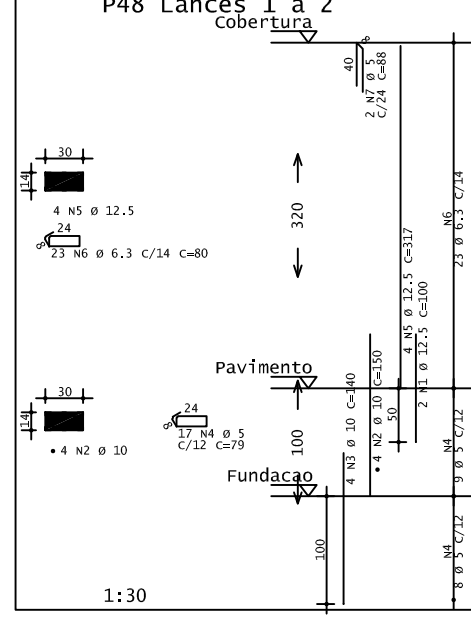
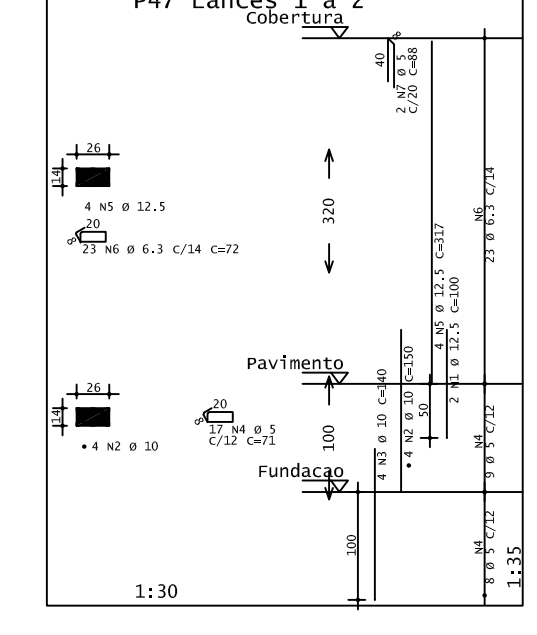
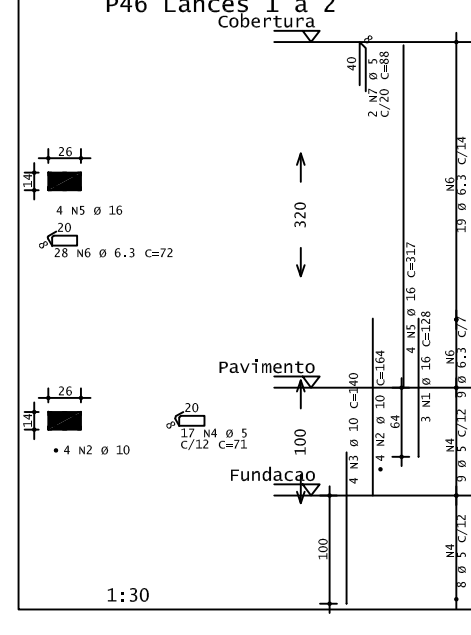
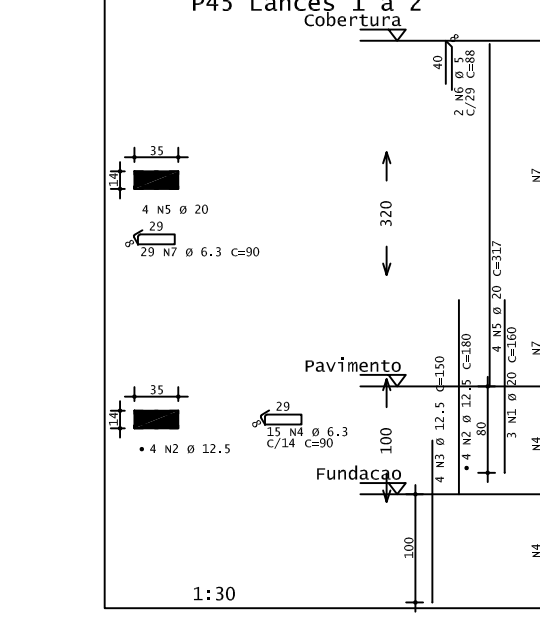
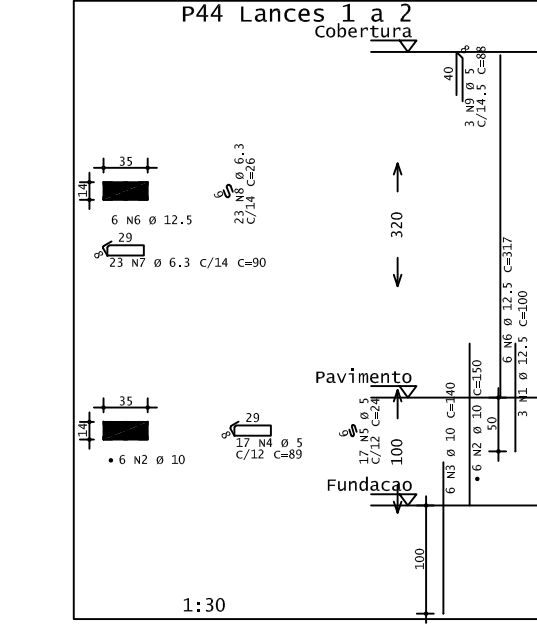
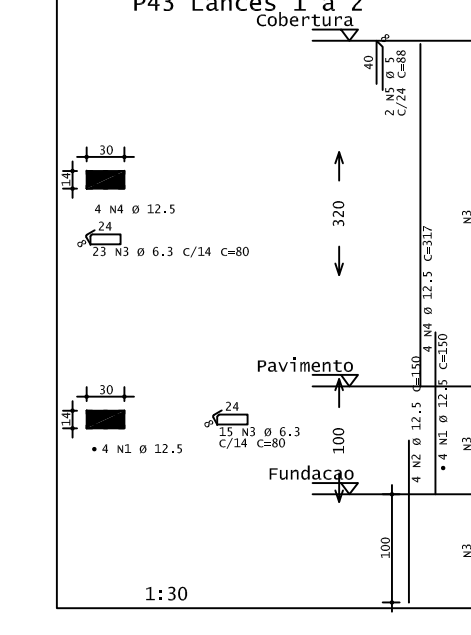
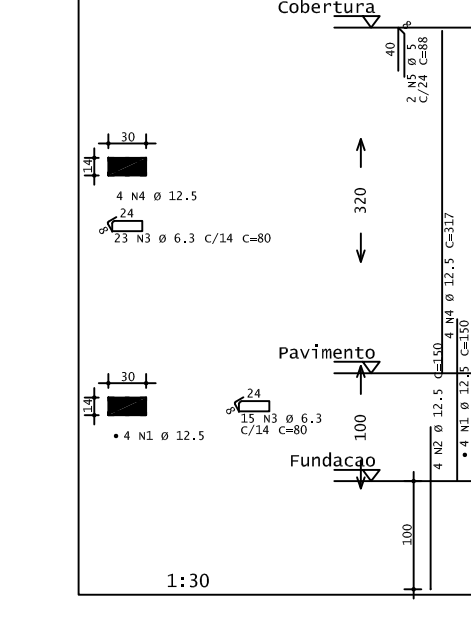
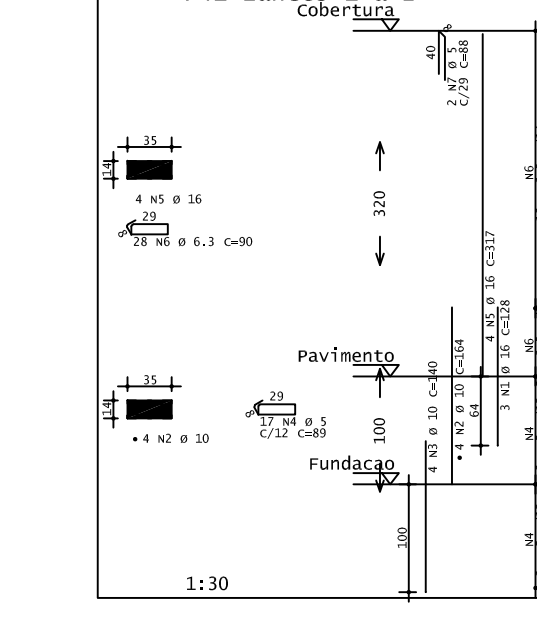
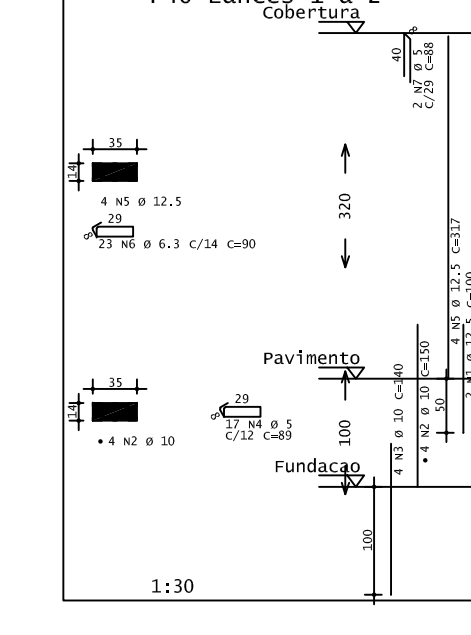
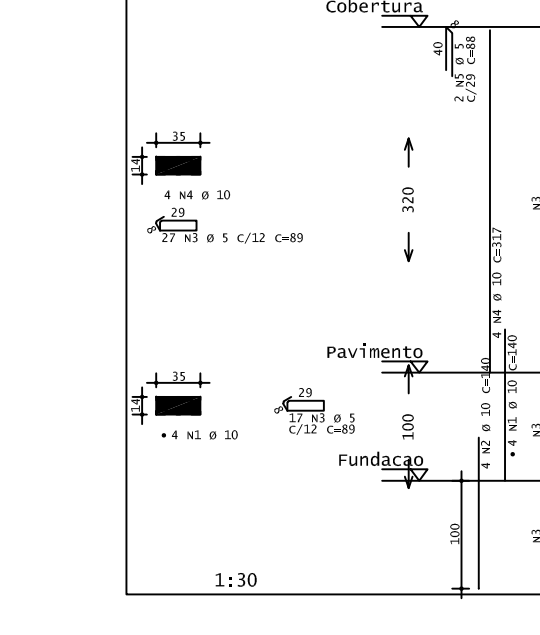
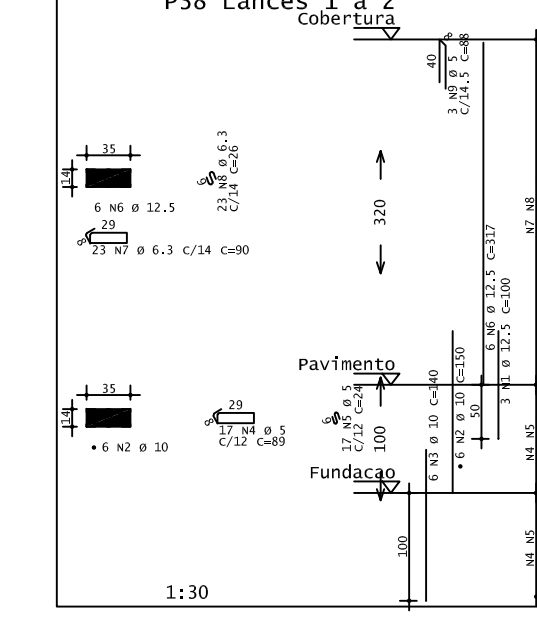
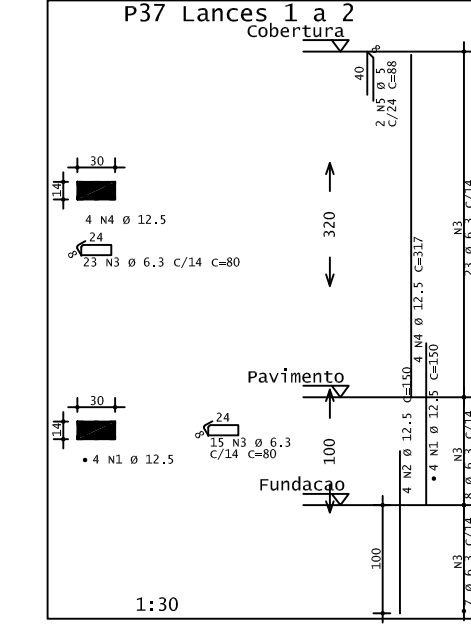
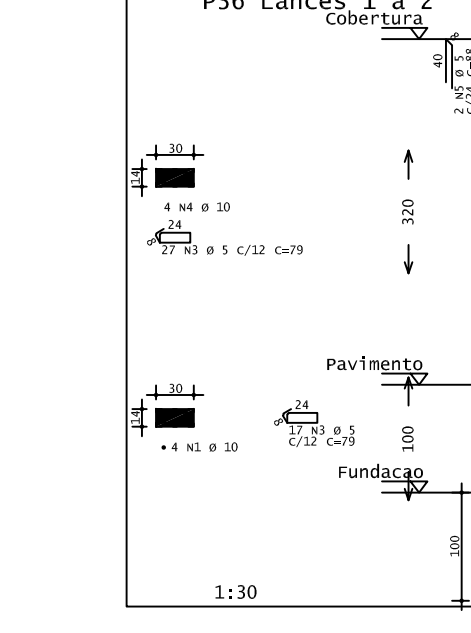
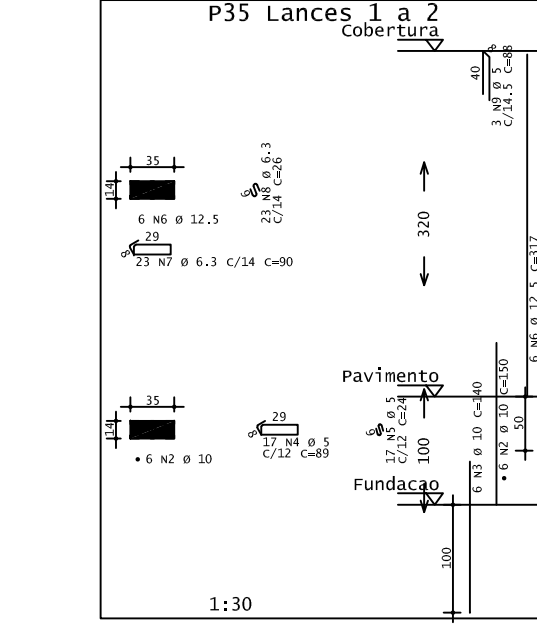
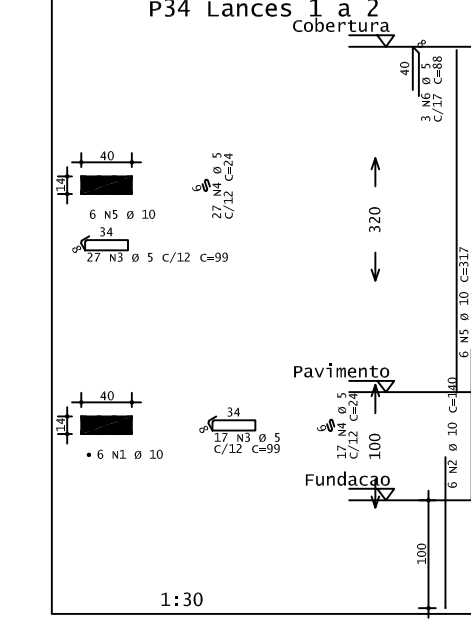
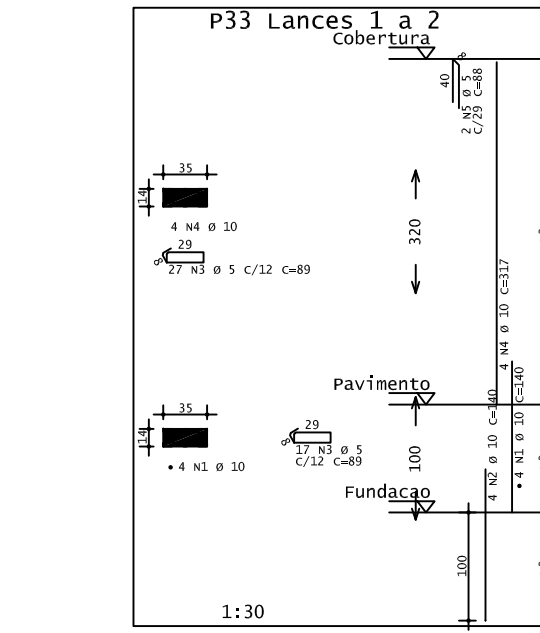
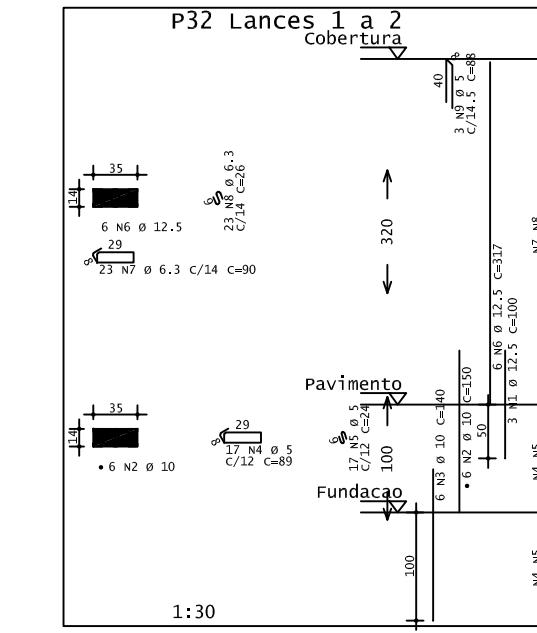
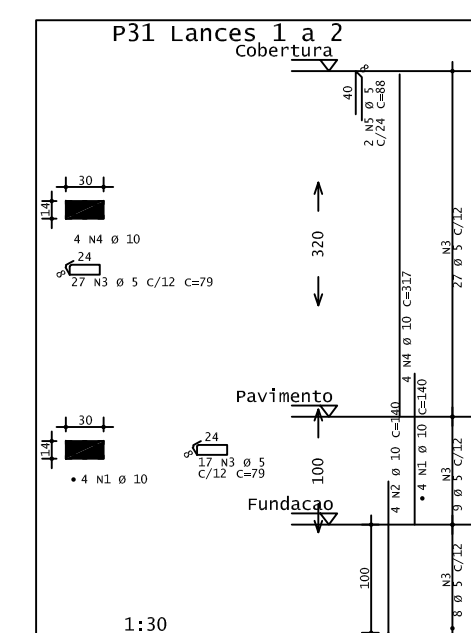
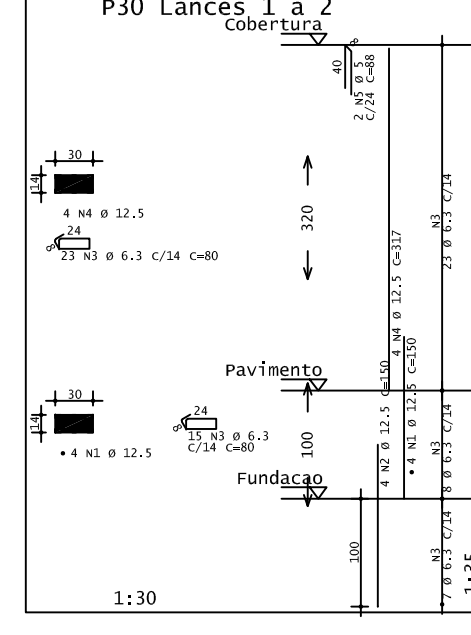
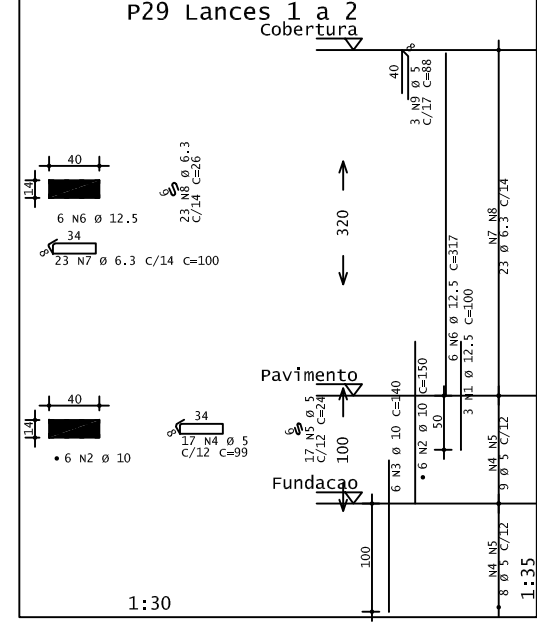
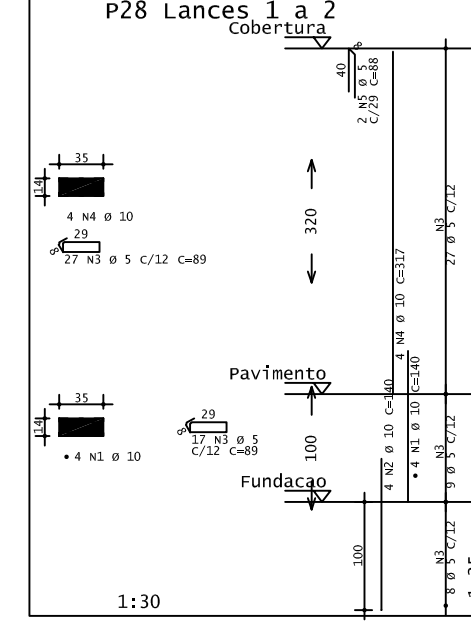
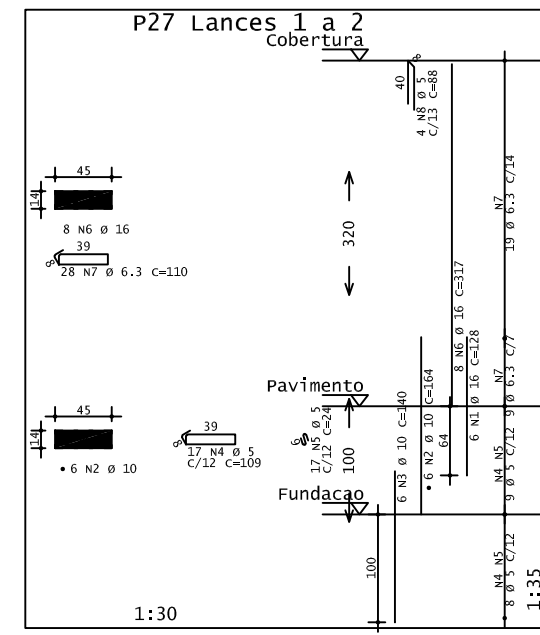
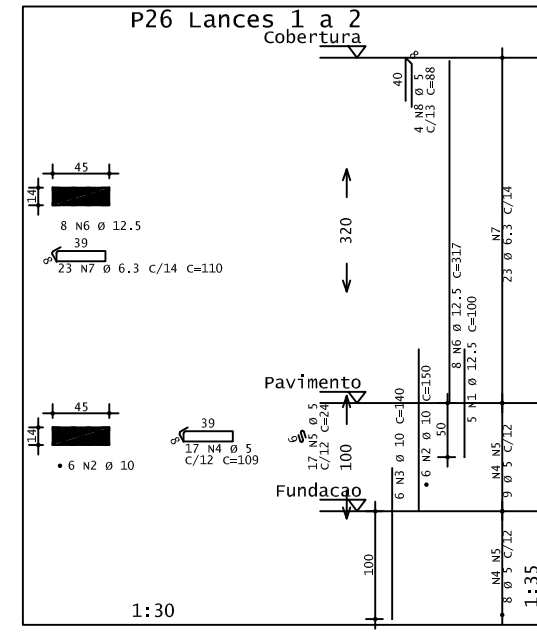
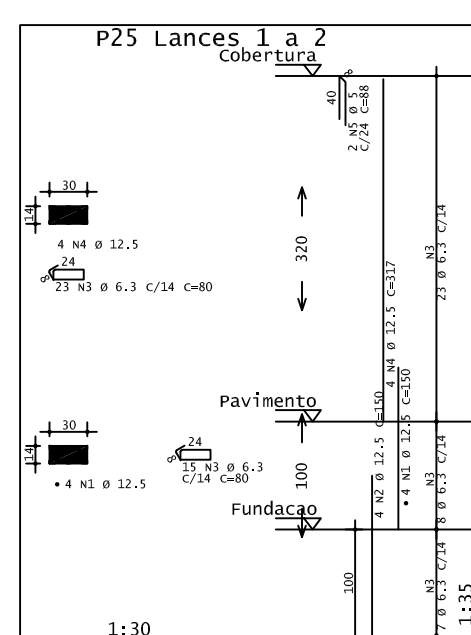


NO	POS	QUANT	UNID	VALOR UNIT	VALOR TOTAL
P25	1	1	m ²	12,5	12,5
P25	2	1	m ²	12,5	12,5
P26	1	1	m ²	12,5	12,5
P26	2	1	m ²	12,5	12,5
P27	1	1	m ²	12,5	12,5
P27	2	1	m ²	12,5	12,5
P28	1	1	m ²	12,5	12,5
P28	2	1	m ²	12,5	12,5
P29	1	1	m ²	12,5	12,5
P29	2	1	m ²	12,5	12,5
P30	1	1	m ²	12,5	12,5
P30	2	1	m ²	12,5	12,5
P31	1	1	m ²	12,5	12,5
P31	2	1	m ²	12,5	12,5
P32	1	1	m ²	12,5	12,5
P32	2	1	m ²	12,5	12,5
P33	1	1	m ²	12,5	12,5
P33	2	1	m ²	12,5	12,5
P34	1	1	m ²	12,5	12,5
P34	2	1	m ²	12,5	12,5
P35	1	1	m ²	12,5	12,5
P35	2	1	m ²	12,5	12,5
P36	1	1	m ²	12,5	12,5
P36	2	1	m ²	12,5	12,5
P37	1	1	m ²	12,5	12,5
P37	2	1	m ²	12,5	12,5
P38	1	1	m ²	12,5	12,5
P38	2	1	m ²	12,5	12,5
P39	1	1	m ²	12,5	12,5
P39	2	1	m ²	12,5	12,5
P40	1	1	m ²	12,5	12,5
P40	2	1	m ²	12,5	12,5
P41	1	1	m ²	12,5	12,5
P41	2	1	m ²	12,5	12,5
P42	1	1	m ²	12,5	12,5
P42	2	1	m ²	12,5	12,5
P43	1	1	m ²	12,5	12,5
P43	2	1	m ²	12,5	12,5
P44	1	1	m ²	12,5	12,5
P44	2	1	m ²	12,5	12,5
P45	1	1	m ²	12,5	12,5
P45	2	1	m ²	12,5	12,5
P46	1	1	m ²	12,5	12,5
P46	2	1	m ²	12,5	12,5
P47	1	1	m ²	12,5	12,5
P47	2	1	m ²	12,5	12,5
P48	1	1	m ²	12,5	12,5
P48	2	1	m ²	12,5	12,5
TOTAL					744,00



<p>PROJETO ESTRUTURAL PILARES</p>		<p>FOLHA 21/28</p>				
<p>CONSTRUÇÃO DE PRÉDIO INSTITUCIONAL ESCOLA MUNICIPAL</p> <p>LOCALIZAÇÃO: RUA 02 – TRAVESSA JOÃO AUGUSTO DA FONSECA LOTEAMENTO SÃO JORGE ITAPEVA – MG</p> <p>PROPRIETÁRIO: PREFEITURA MUNICIPAL DE ITAPEVA CNPJ 18.677.625/0001-58</p> <p>ESCALAS 1: 75</p> <p style="text-align: right;">MUNICÍPIO DE ITAPEVA</p>						
<p>SITUAÇÃO S/ ESCALA</p>	<p>DECLARAÇÃO</p> <p>DECLARO QUE A APROVAÇÃO DO PROJETO PELA PREFEITURA NÃO IMPLICA NO RECONHECIMENTO DO DIREITO DE PROPRIEDADE DE DE TERRENO.</p> <p>PROPRIETÁRIO:----- PREFEITURA MUNICIPAL DE ITAPEVA CNPJ 18.677.625/0001-58</p>					
<p>ÁREAS EM m²</p> <table border="1"> <tr> <td>TERRENO</td> <td>6.000,00</td> </tr> <tr> <td>ÁREA DE CONSTRUÇÃO</td> <td>1.625,94</td> </tr> </table>			TERRENO	6.000,00	ÁREA DE CONSTRUÇÃO	1.625,94
TERRENO	6.000,00					
ÁREA DE CONSTRUÇÃO	1.625,94					
<p>PROJETO:----- ENR. MATEUS FERREIRA BAETA NEVES CREA 228160/D ART 5701649</p>						
<p>DESENHO: O AUTOR DO PROJETO</p>						