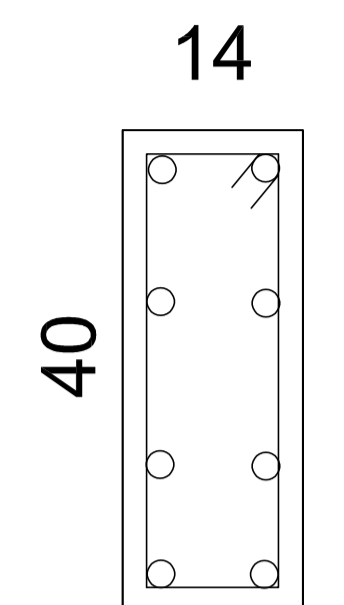
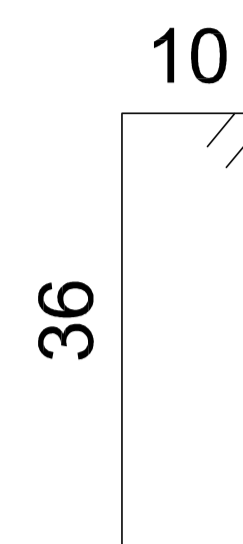


## PILARES CONVENCIONAIS ( PC ) 19 PILARES

PC1 = PC2 = PC12 = PC13 = PC14  
SEÇÃO: 14 x 40 cm

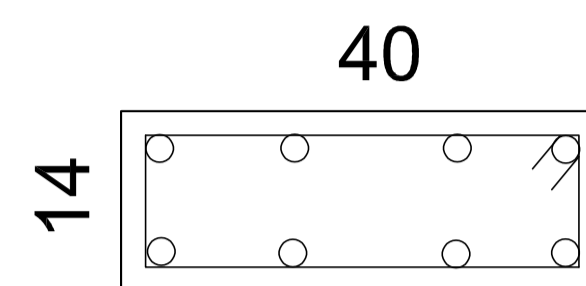


8 Ø 10 mm

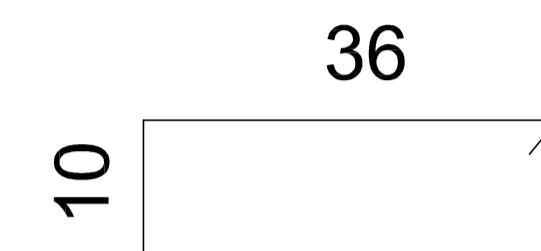


Estribo Ø 5,0 mm  
cada 15 cm  
c = 104 cm

PC3 = PC4 = PC5 = PC6 = PC7 = PC8 = PC9 = PC10 = PC11 = PC15 = PC16 = PC17 = PC18 = PC19  
SEÇÃO: 40 x 14 cm



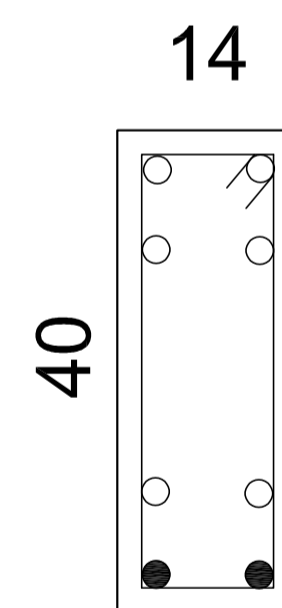
8 Ø 10 mm



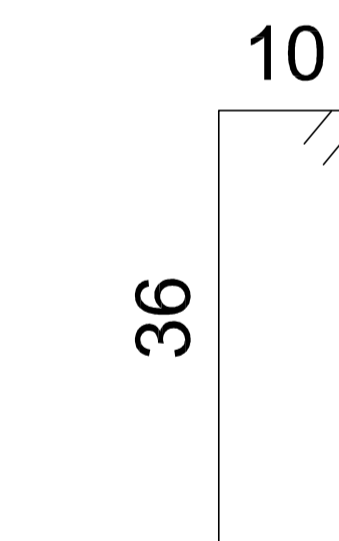
Estribo Ø 5,0 mm  
cada 15 cm  
c = 104 cm

## VIGAS CONVENCIONAIS ( VC ) 07 VIGAS

VC1 - L = 8,66 m  
SEÇÃO: 14 x 40 cm



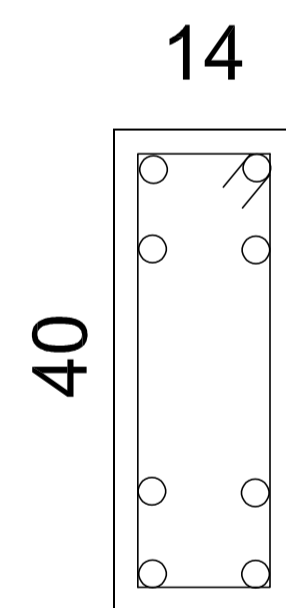
6 Ø 10 mm  
2 Ø 12,5 mm



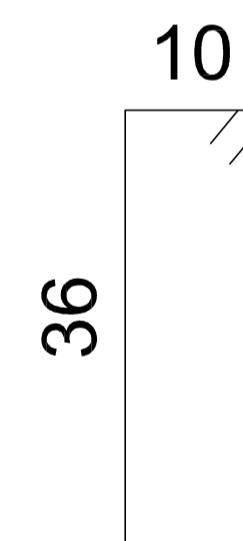
Estribo Ø 6,3 mm  
cada 15 cm  
c = 104 cm

○ Ø 10 mm  
● Ø 12,5 mm

VC2 = VC7  
VC2 - L = 7,72 m - VC7 - L = 6,81 m  
SEÇÃO: 14 x 40 cm



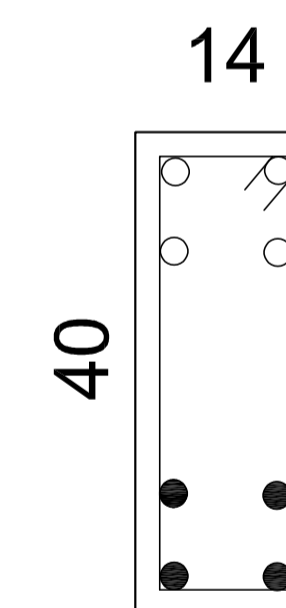
8 Ø 10 mm



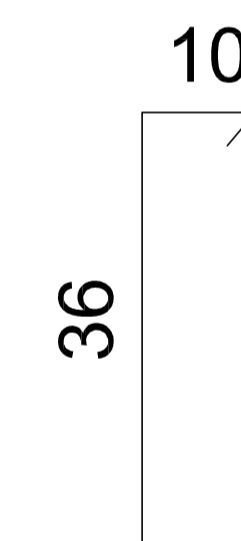
Estribo Ø 6,3 mm  
cada 15 cm  
c = 104 cm

○ Ø 10 mm  
● Ø 12,5 mm

VC2 = VC7  
VC2 - L = 7,72 m - VC7 - L = 6,81 m  
SEÇÃO: 14 x 40 cm



4 Ø 10 mm  
4 Ø 12,5 mm



Estribo Ø 6,3 mm  
cada 15 cm  
c = 104 cm

○ Ø 10 mm  
● Ø 12,5 mm

## PILARES - VIGAS - CANALETAS

FOLHA  
Nº 03  
ESTRUTURA

Local: Rua 02 - Travessa João Augusto Pereira  
Loteamento São Jorge - Itapeva - M.G.  
Área da Edificação: 2.185,93 m<sup>2</sup>  
Propr.: Prefeitura Municipal de Itapeva

Escala 1:125

R.T.: Mateus Ferreira Baeta Neves  
CREA 221.860/D